

LSTM BRAND Perennial Ryegrass

TURFGRASS DEVELOPED TO
**WITHSTAND
WEAR**



A-LIST APPROVED

Low Input Turf Varieties

SELF-REPAIRING

Lateral Spread Tillers Fill in Bare Spots

DISEASE RESISTANT

Gray Leaf Spot Resilient



NEVER FEAR

WEAR



LS Perennial Ryegrass regrowth shown above was filled in almost completely within 35 days!

INTRODUCTION

Most times you don't know what you need till it's too late—like choosing the wrong turfgrass variety that thins and withers under heavy use. With LS Perennial Ryegrass you can avoid the failures of traditional ryegrass varieties.

LS Perennial Ryegrass is one tough grass, not only is it able to withstand wear it also has the ability to self-repair those heavy traffic areas. But that's just the beginning—LS Perennial Ryegrass looks better than the lighter green European varieties. Its dark green color, fine leaf texture and density make it an ideal choice for all your permanent turfgrass needs.

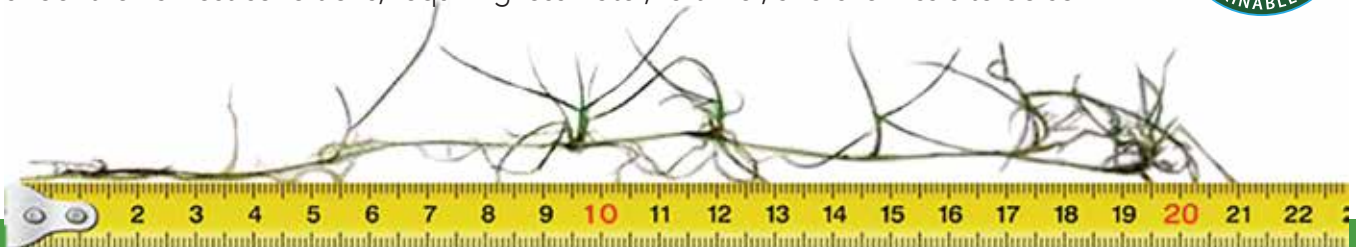
DEVELOPED TO WITHSTAND WEAR

LS Perennial Ryegrass is a blend of elite grass varieties bred specifically to excel under the intense wear found on sports fields and golf courses. Although greatly improved over the last four decades, most turfgrass species exhibit growth patterns that are more vertical than lateral. Individual selections however vary greatly in their ability to generate shoots or tillers. On occasion, these selections have also been observed to create rhizomes/tillers, which similar to bluegrass, form distinct new plants adjacent to the mother plant, increasing stand density and hastening recuperation.

Mountain View Seeds (collaborating with both public and private breeders) examined tens of thousands of individual collections, selecting for these expressions that in addition to excellent appearance and disease resistance show increased tendency to fill in newly seeded areas as well as areas thinned by wear and environmental conditions.

A-LIST APPROVED

LS Perennial Ryegrass blend contains varieties approved by the Alliance for Low Input Sustainable Turf. These varieties have shown the ability to maintain excellent turf quality under the harshest conditions, requiring less water, fertilizer, and chemicals to do so.



LS Brand Perennial Ryegrass spreads through tillers seen above. This spreading ability is the secret to the self-repair ability of LS Brand Perennial Ryegrass.



// We at Virginia Tech Athletics have been using MVS LS Brand Ryegrass on our natural grass playing surfaces. It has been a game changer in our overseeding program! LS Brand Ryegrass has healthy and speedy germination, excellent aesthetics, and strong resistance to diseases. //


Emerson Puliam, Associate Director, Fields
Virginia Tech

TRIAL BY FIRE


Developing unique varieties does not happen overnight. It can take a decade or more before a variety is released for trials. The varieties submitted for trials should consistently exhibit the traits selected for—with no regression possible. Proper breeding ensures the variety will always exhibit the characteristics that it has been selected for and the buyers of the seed know exactly what to expect. If a variety has been bred and selected correctly, trials will echo and validate what was observed during the development process.

Independent, third-party trials such as those performed by the National Turfgrass Evaluation Program (NTEP) and Sports Turf Research Institute (STRI) are designed to develop and coordinate uniform evaluation trials of turfgrass varieties. Test results are used by companies and plant breeders to determine the broad picture of the adaptation of a cultivar. Results can also be used to determine if a cultivar is well adapted to a local area or level of turf maintenance.

There are companies that simply rely on their own research to validate their breeding programs. Unfortunately these in-house trials are anything but independent. Make sure you ask for NTEP or STRI data.

	Seedling Vigor	Turf Quality Traffic	Crown Rust Resistance
STELLAR 4GL 	6.4	3.6	7.7
Pharaoh	6.3	2.9	5.7
Seabiscuit	6.6	2.8	5.7
Green Supreme+	5.7	2.5	3.0

2017 NTEP Trial; Mean of All Locations

	Gray Leaf Spot Resistance	Wear Tolerance	Spring Greenup
SLUGGER 3GL 	8.7	6.2	6.6
Man O War	6.7	6.0	6.6
PST-2Foxy	6.3	6.0	6.7
Gray Hawk	5.3	5.4	6.0

2017 NTEP Trial; Mean of All Locations

	Seedling Vigor	Divot Recovery	Turf Quality
HOME RUN LS	6.4	92.6%	6.3
Man O War	6.1	88.7%	5.9
Karma	4.8	87.9%	5.9
Allstar III	5.9	85.0%	5.7

2017 NTEP Trial; Mean of All Locations

	Regrowth	Shoot Density	Summer Color
TORSION	8.1	7.6	8.0
Bargold	6.5	7.4	5.7
Francesca	7.5	7.0	5.8
Melbourne	6.1	7.2	5.9

2019 STRI Trial



Growth pattern differences between LS Perennial Ryegrass on the right and the other "regenerating" ryegrass on the left after six months.

FOR ALL YOUR **HIGH TRAFFIC** **HIGH-QUALITY** **TURFGRASS NEEDS**

LS Perennial Ryegrass is the ideal choice for any professional application with dark green color, dense sward and fine texture. Whether it's on a tee box, fairway or rough it will always look great on the golf course. Wear tolerance and recuperative traits also makes it a great for cart paths and driving ranges. It's perfect for any sports field. Whether a college football field or a large soccer complex you can rely on LS Perennial Ryegrass to hold up to high traffic use. Landscapers and contractors, reduce call backs due to thinning lawns or yellow turf. Rely on LS Perennial Ryegrass for happy customers.



The dramatic difference between the overall turf quality—color, density and leaf texture—of the LS Perennial Ryegrass and Linn perennial ryegrass.



At Mountain View Seeds, we rely on our experience and people. We know grass seed research, production and processing—after all, we've been bringing you Oregon's best for more than 25 years.

We take pride in the knowledge and skill of our staff. From research and development to production and order fulfillment, we hire the best to make buying grass seed easy.

WE BELIEVE IN BETTER | 503.588.7333 | MTVIEWSEEDS.COM